



HOUSING PORTFOLIO CHIEF

RYAN MONTOUR

"The Council Table is pleased with the direction the Housing Unit is taking. After overcoming many challenges, we can enhance service delivery now that an improved structure is in place within the Housing Unit."

MARK YOUR CALENDARS

SPECIAL COMMUNITY MEETING ON HOUSING

Date: Thursday, June 22, 2023

Time: 6PM to 8PM

Location: Knights of Columbus

Come to meet us, questions will be answered, it will be an opportunity to submit your application for housing or other inquiries.



MONEY MATTERS WORKSHOP

Date: Thursday, June 29, 2023

Time: 5:30PM - 8:30PM

Location: Tewatohnhi'saktha building

Read More on the Team

kahnawake.com/org/sdu/housing/



FOREWORD FROM THE EDITOR

We're excited to release our second Housing Newsletter! Our Newsletter is to enhance transparency to the community. We want to inform you about what the Housing Unit is doing and how we're doing it. We're a new team of passionate employees with strong customer service skills, focusing to provide excellent housing client support and assist our community.

Lead Newsletter Designate
Tehotenion Skye,
Client Information Intake Lead

AVAILABLE PROGRAMS

Revolving Loan Fund(RLF): \$175,000.00 max loan, 5% down-payment, at-market interest, balance of the contract loan will be added as down payment, 30-year term.

On-Reserve Loan guarantee Program(ORLGP): \$175,000.00 max loan, 5% down-payment, at-market interest, balance of the contract loan after \$175,000 will be added as down payment, loan guaranteed by MCK in partnership with Caisse Kahnawake, 25-year term.

House Repair Loan Program(HRLP): \$25,000.00 max loan, 6% annual interest, balance after \$25,000.00 will be added to down-payment.

Residential Rehabilitation Assistance Program-(Disability)(RRAP): Grant for bringing house back-up-to living standards, grant is based on work required. Eligible items: Roof, Floor support, foundation repair, plumbing, heating, overcrowding, fire safety.

Rentals: Monthly payments \$433 to \$510, 400sq.ft to 1,400sq.ft accommodations based on community members' needs.

Rent-to-Equity(RTE): "CURRENTLY ON HOLD", 25-month rental program to help make down payment on RLF Program, monthly payments \$433 to \$510, plus \$400 equity on top of monthly payments, 400sq.ft to 1,400sq.ft accommodations based on community members needs. Total balance of equity to be released upon completion of program.

**PROGRAMS
CURRENTLY
UNDER REVIEW**



In 2023,
we moved in
11
new tenants.

From **April 2023**
to **June 2023**,
We have completed
37
Maintenance Repairs.

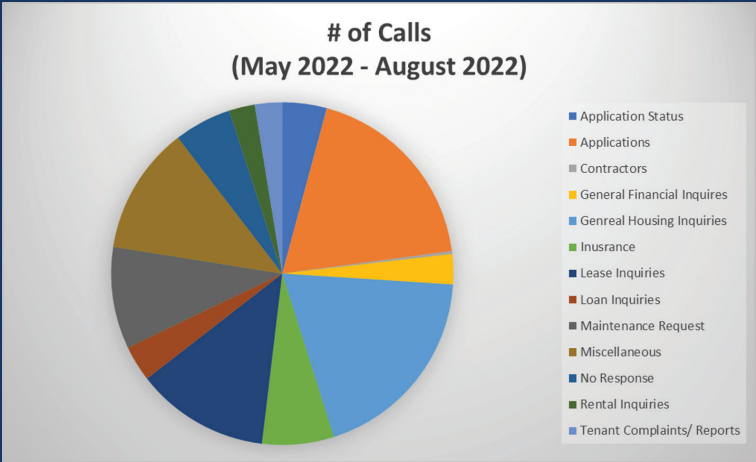
**WHAT DO OUR
TENANTS
HAVE TO SAY?**

"We love it! It was nice.
The move in process
was good. You told us
everything we needed
to know."

"We were satisfied with how
quick the process was. We are
pleased with our unit."

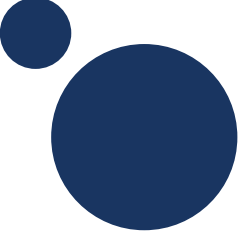
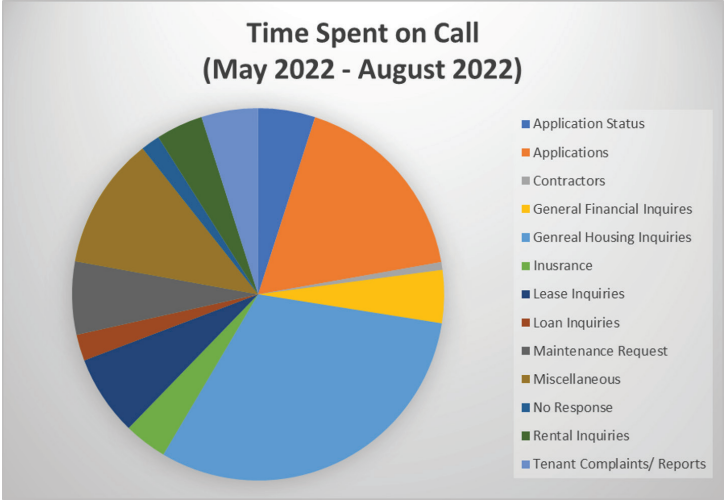
RENOVATIONS COMPLETED THIS YEAR

This year, the Housing Unit has completed 3 renovation projects, opening an additional 3 homes for families to move-into.

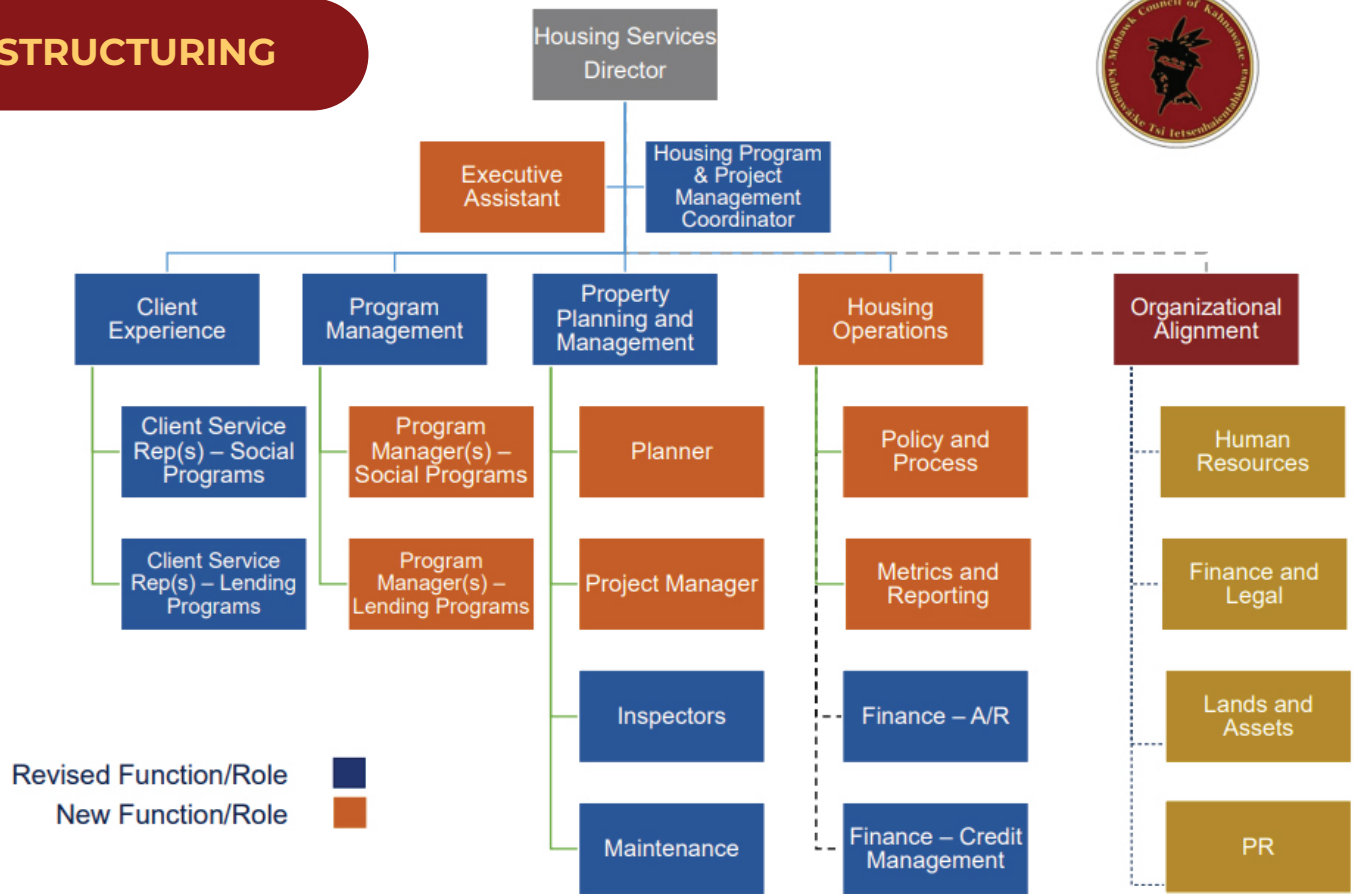


We receive many calls to the Housing Unit. The chart shows that a majority of callers are seeking general information about housing programs, like rental or loan programs, and how to create applications. In a span of 4 months, we received 738 calls to the unit, spending around 49.5 hours on calls alone.

As part of our documentation, we track all calls received by the unit.



RESTRUCTURING



UPDATES ON NEW HOUSING ROLES



Marouane Abid
Program Manager

The role researches, develops, and implements new housing programs and services which are aligned to the community's needs and the strategic direction of the Housing Unit. The program manager is also responsible for the continuous improvement of the active programs. The position is accountable for defining the administrative and operational components of the Housing programs including ongoing monitoring and reporting of program performance.



Rosemary Lahache
Housing Programs & Project Management Coordinator

Reports to the Director of Housing Unit provides Program and Project Management support to the Housing Unit, and more directly, the Housing Director and the Housing General Managers.

Assists in completing Special Projects assigned by the Director and acts as an internal project resource and/or coordinator for projects, budgeting coordination or program contracts. Conducts research/evaluate resources for the unit needs and assist the Director to develop eligibility criteria and rules for special projects.

KEEP AN EYE-OUT FOR REWARDING AND EXCITING NEW JOB POSTINGS ON THE MCK WEBSITE TO JOIN OUR UNIT AND TO AID OUR GOAL IN MAKING KAHNAWÀ:KE A SAFE AND FUN PLACE TO LIVE.